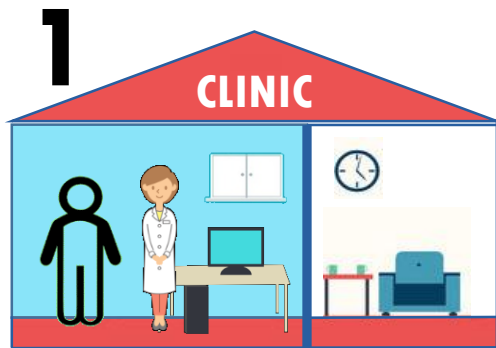
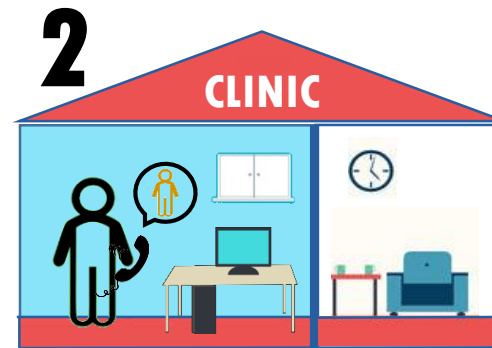
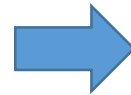


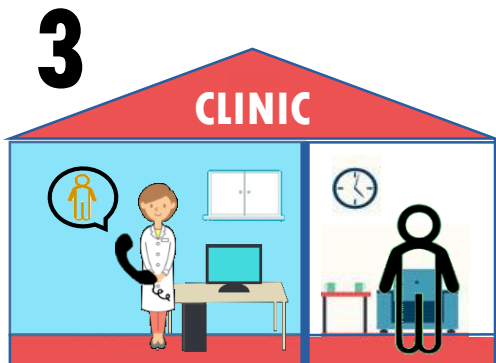
Overview of APT process



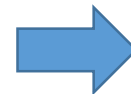
A patient is diagnosed with chlamydia, and is offered APT as a method of partner notification in clinic (intervention phase).



If the patient chooses APT, they call their sexual partner(s) to tell them about their diagnosis and explain the treatment options.



The patient then leaves the room and the healthcare professional calls the sexual partner to carry out a private telephone consultation.



If it is safe to prescribe, the patient can take a pack containing an STI self-sampling kit, antibiotic treatment and health promotion information from the clinic, and deliver it to their partner. (Alternatively, the partner can choose to have the pack delivered to them by post).

